

China National Sword

City of Newport
Thompson's Sanitary Service Inc.

History of Recycling (Overview)

- 1991 -- ORS 459 passage of rigid plastic container law
 - State Goal adopted 25% recovery of plastic
- Price of comingle
- Green Fence/China National Sword
 - Import Ban 24 Items (Plastic & Mixed Paper)
- Future?



Operation Green Fence (2013)

National Sword

2013 Chinese Customs Program aimed to reduce waste importation and contamination of recyclable materials.

2018 China sets import ban on 24 varieties of sold waste and recyclables.

- Includes types of plastic, unsorted paper and metals commonly sold by US recyclers.
- Wastes and recyclables materials are the sixth largest U.S. export to China.
- In 2016, China processed at least $\frac{1}{2}$ of the world's exports of waste plastic, paper, and metals.

“This regulation will send shockwaves around the world, and force many countries to tackle the ‘out of sight, out of mind’ attitude we’ve developed toward waste,” Greenpeace East Asia plastics campaigner Liu Hua said in a statement.



How'd we get here?



- Cheap Labor/Low Shipping Costs
- Influx of material cheaper to recycle than make new
- Decrease of Domestic Markets
- No Waste Systems in Asia

Before ORS 459



ORS 459 and early recycling collection



Your New Recycling Bin . . .



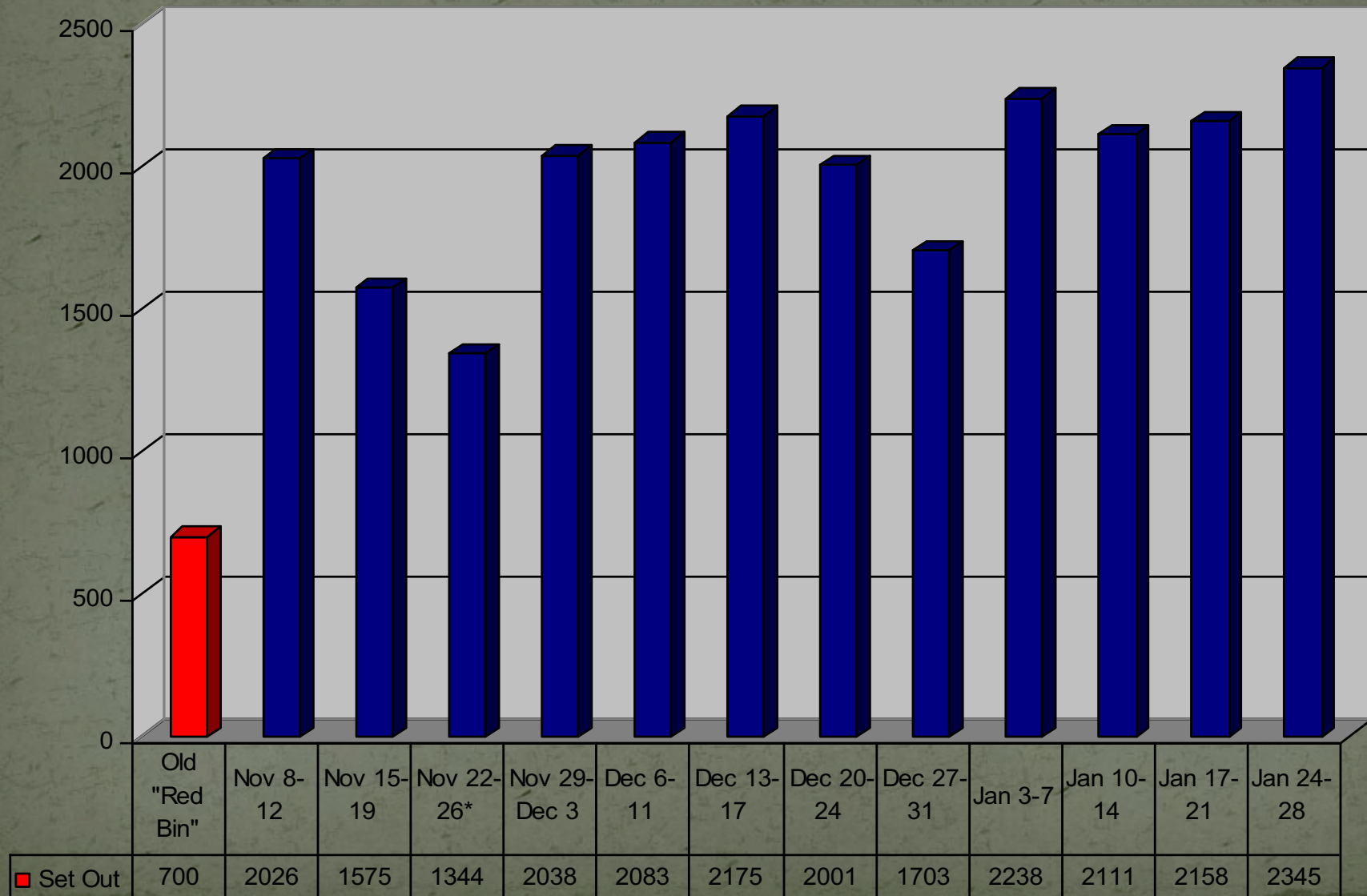
Be a Good Sort . . . Recycle at Your Curb

Comingle Collection 2004



Setout/Week

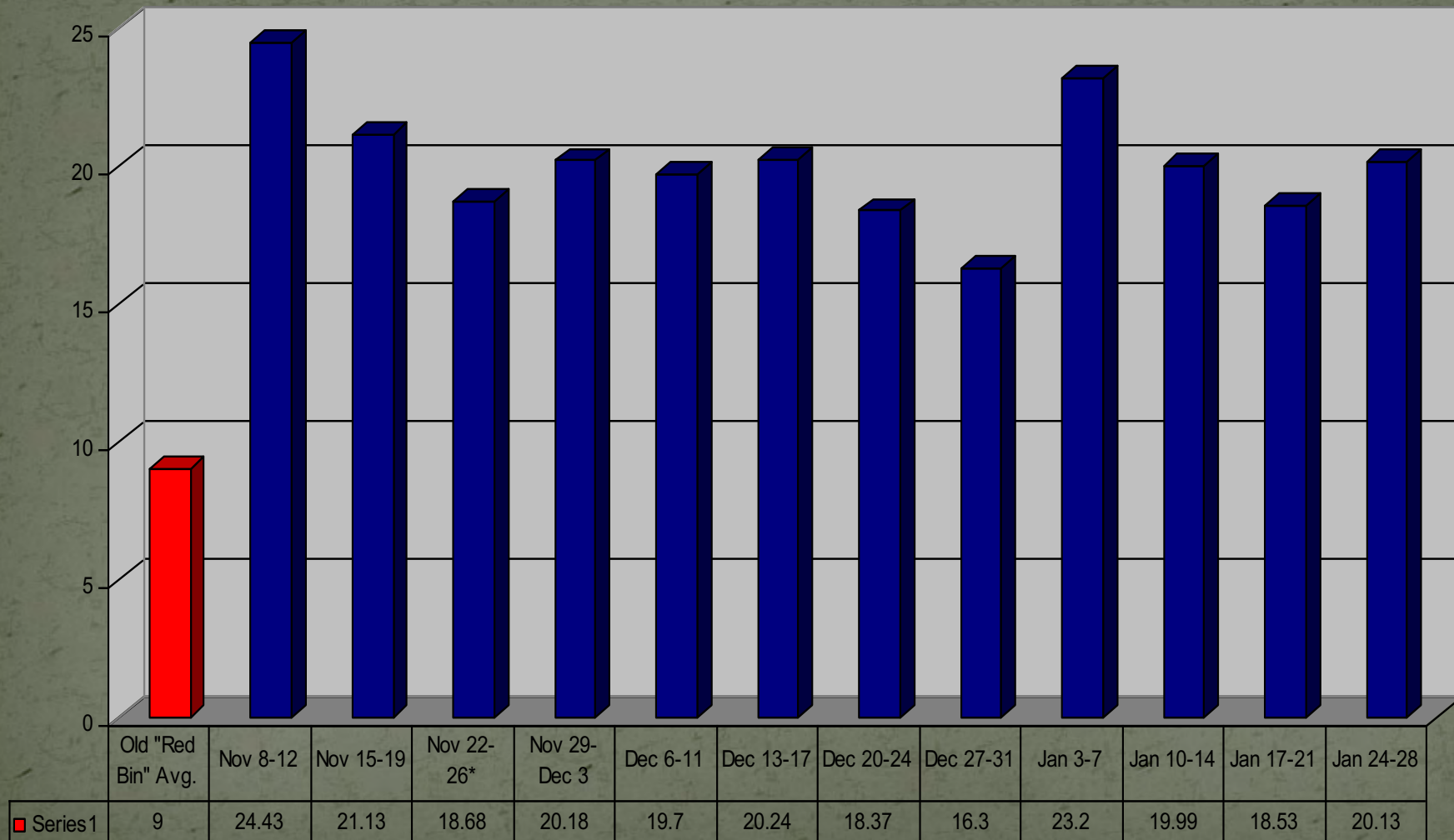
Weekly Automated Set Out
Thompson Sanitary Service Inc. 2004 Nov/Dec



*Thanksgiving Week

Tons/Week

Weekly Automated Comingle Tons
Thompson Sanitary Service Inc. 2004



* Thanksgiving Week





Contamination

- 9-15% at Curb/5% at MRF
- China standard of 0.3% /latest standard of .5-1.0%
- Seattle shipment rejected due to inspection of one load.
 - Entire order canceled.

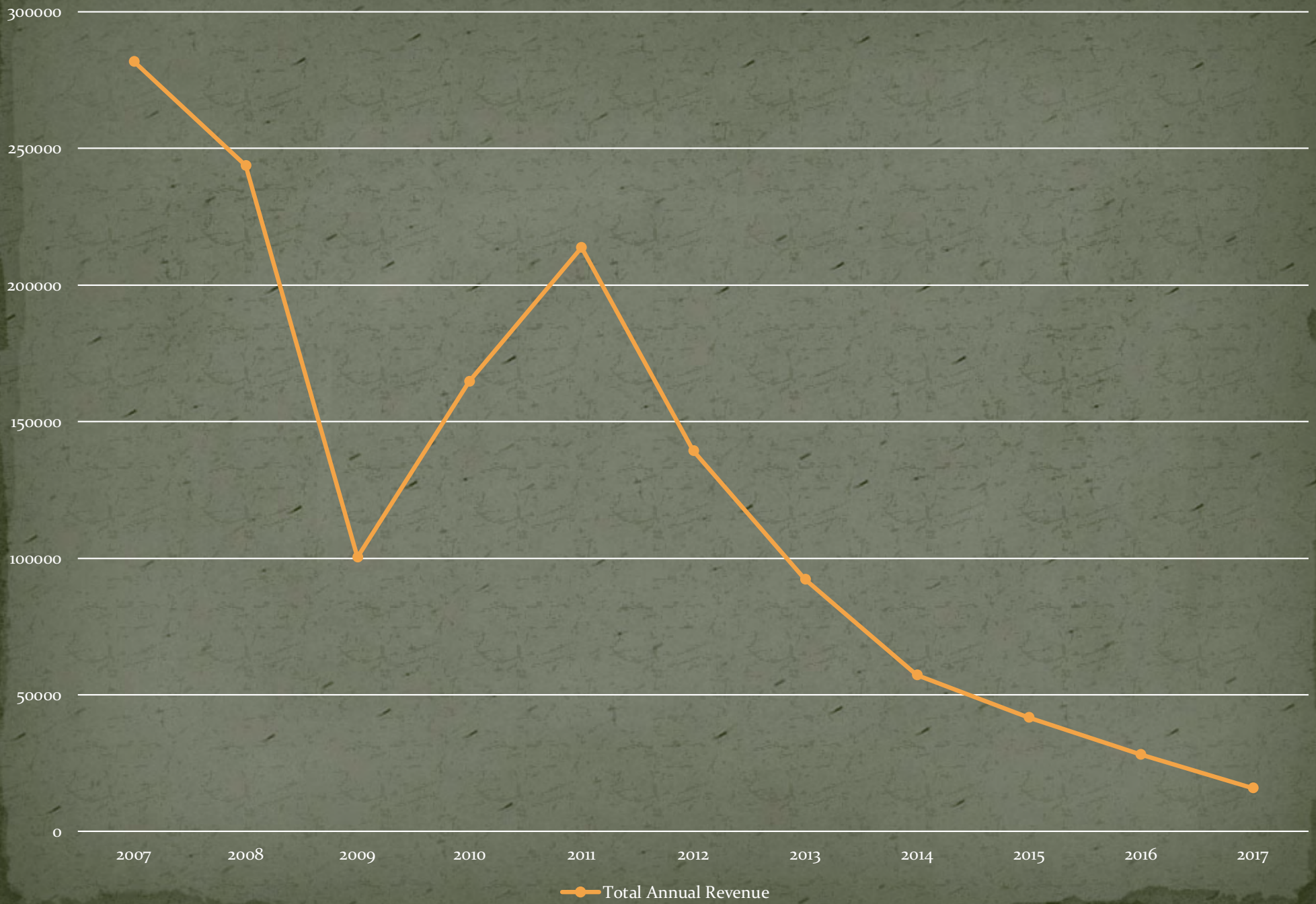
5 Year Price of Commingle



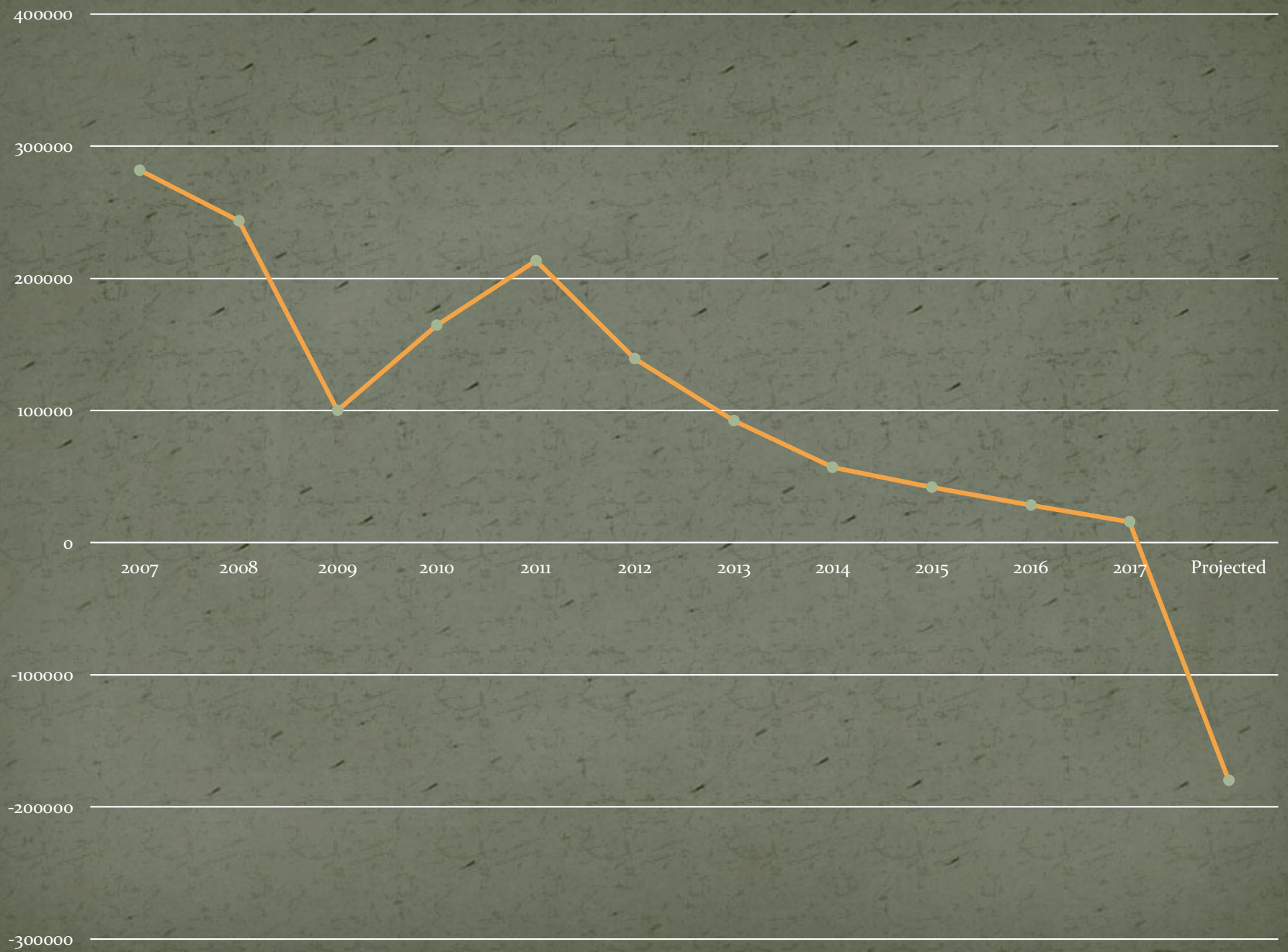
18 Months of Comingle Pricing



10 years of recycling revenue

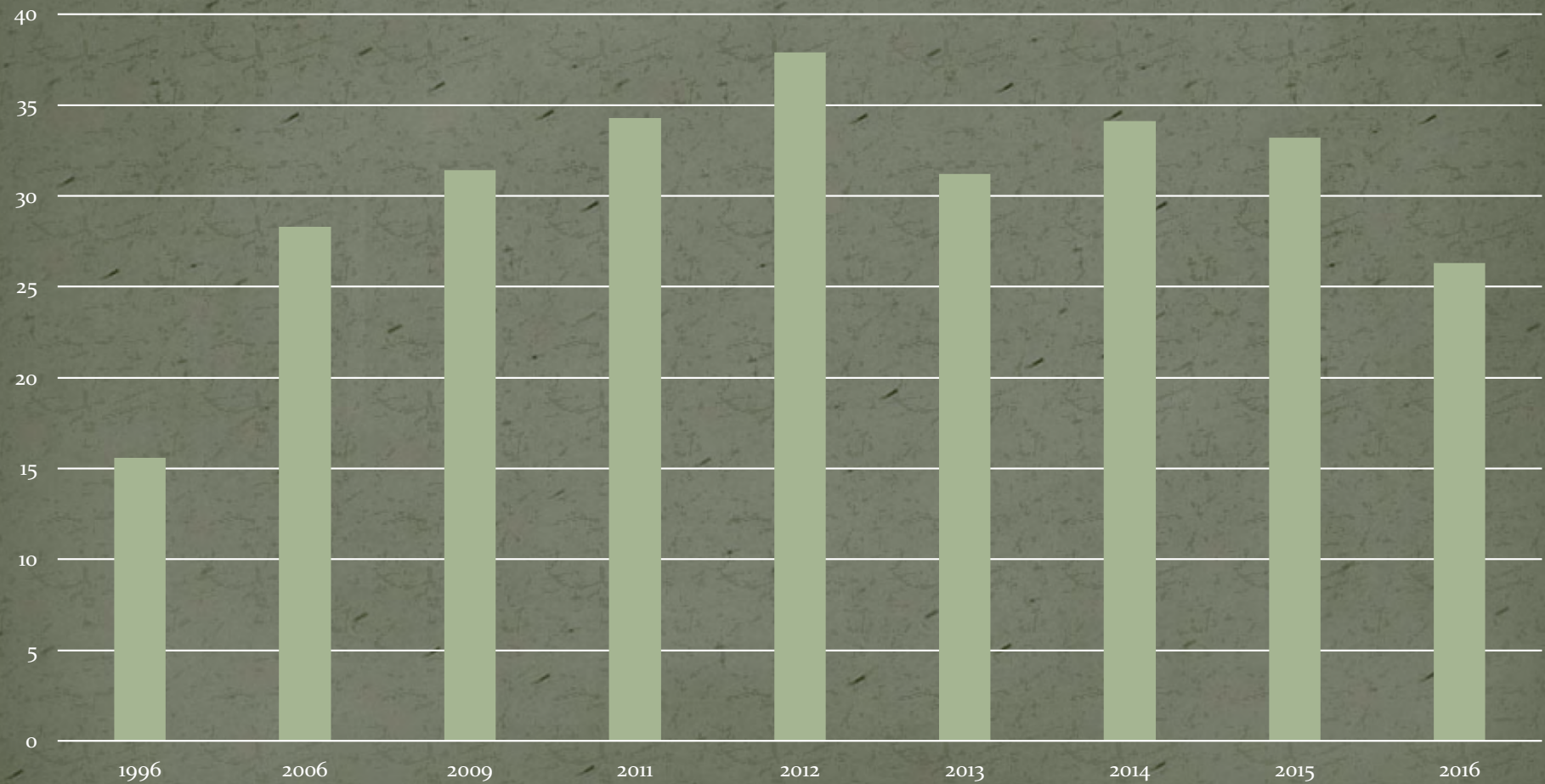


Annual Revenue



Lincoln County

Recycling Rate



United States Senate

WASHINGTON, DC 20510

January 17, 2018

The Honorable Cui Tiankai
Ambassador Extraordinary & Plenipotentiary
Embassy of the People's Republic of China
3505 International Place, NW
Washington, DC 20008

Ambassador Cui:

We write today concerned by China's recent implementation of an import ban on 24 types of waste materials, including paper and plastic. Instead of immediately halting these imports, we urge China to work with the United States to develop a multi-year transition plan so that this mutually-beneficial flow of materials does not come to a complete end.

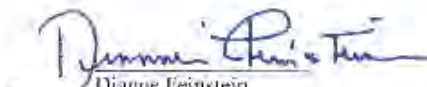
As you undoubtedly know, China is the world's largest producer of paper and plastic materials and post-consumer products are an important part of that manufacturing process. The United States is a large contributor of recycled materials for Chinese production, exporting nearly 8 million tons in 2016 alone.

We understand that one reason China banned the importation of paper and plastic is due to environmental concerns. Exporters in our states are also sensitive to environmental concerns and have worked with China since 2013 to reduce contamination rates of exported recycled materials in order to meet Chinese regulations.

In order to preserve this flow of materials, we ask that China work with the United States to develop a multi-year transition period with attainable contamination levels for importers of recyclable materials. American recyclers maintain some of the lowest contamination rates in the world, and are therefore capable of supporting China's goal of sustainable environmentally-friendly manufacturing.

We believe that it is in the best interest of both the United States and China to work together to implement a transition period that allows for American recyclers and Chinese manufacturers to continue this important commerce. Thank you for taking the time to review this matter.

Sincerely,


Dianne Feinstein
United States Senator


Ron Wyden
United States Senator

Getting Support from Oregon Senators

Why can't I recycle all plastics?



Three factors:

1. Type of Plastic
2. Material's ability to be sorted
3. Recycling Markets

What next?



Keep It Clean.

- KEEP IT CLEAN, Plastics #1 & 2, bottles only
- No more wishful recycling--*when in doubt throw it out*
- Use your purchasing power
- Practice 3R's – Reduce, Reuse, Recycle

Your guide to waste
in Newport, Oregon



MIXED COMPOSTABLES - if it Grows, it Goes!

ALL FOOD

fruits, vegetables, meat, poultry, seafood, bones, grains, beans, pasta, bread, cheese, and eggshells

FOOD-SOILED PAPER

napkins, paper towels, paper plates, tea bags, coffee grounds/filters, wooden crates, sawdust

PLANTS

floral trimmings, tree trimmings, leaves, grass, brush, weeds



NO plastic bags, grease, pet waste, or waxed cardboard

MIXED RECYCLING - Keep it Clean.

PAPER / CARDBOARD

Flattened Cardboard, Junk mail, magazines, flyers, office paper, envelopes, gift wrap & cards (no foil), post-it notes, paper bags, newspaper, paperboard, phone books/paperback books (loose in a paper bag or cereal box).

METAL

RINSE FIRST. Tin & aluminum cans, aluminum foil, pie pans, metal lids, & empty aerosol cans (do not puncture or remove nozzle), other scrap metal (30lb. max, no longer than 30 in).

PLASTIC #1&2

RINSE FIRST. Plastic #1 & 2 BOTTLES ONLY. No tubs or plastic #3-7



look for this!



NO GLASS, PLASTIC BAGS, STYROFOAM; No plastic #3-7, No plastic cutlery, plates, or cups; No toys or large plastic items, No Waxed Cardboard (e.g. milk cartons, juice boxes)

Throw away in LANDFILL cart

Please exhaust options of reusing or recycling before disposing of refuse in your landfill cart.

Note some common items on the right which cannot be recycled in our current system.



PLASTIC #3-7, CUPS/UTENSILS

STYROFOAM



WAXED CARDBOARD



ASEPTIC CONTAINERS



7450 NE Avery Street
Newport, Oregon 97365
Ph. 541.265.7249. MORE INFO: thompsonsanitary.com

Education

- Working as an industry to have same “acceptables” list.
March 2nd 2018.
- Printable guides on our website
- Working with Multi-Family Dwellings
- Direct Mail to Customers, Email, Facebook, Instagram, Website, Newspaper, Radio, Twitter

Letter Direct Mail

Important Service Information

February 26, 2018

Dear Thompson's Sanitary Service Customer,

Due to the Republic of China's *National Sword Act*, announced July 2017 with an effective date of January 1st, 2018, twenty four (24) recyclable items are now banned from import to their country. The good news is China is trying to clean up their environment; the bad news is this severely impacts our recycling efforts because China has been the primary market for the West Coast.

We are now forced to clean up our recycling stream to keep our existing recycling markets. In that effort, as of March 1st, **we can no longer accept plastics #3-7 or shredded paper in your blue mixed recycling cart.** It is critical your recycling stay clean to keep the market viable.

PLASTIC #1 & 2 BOTTLES are still recyclable

Put plastics #3-7 in your landfill/garbage cart as well as plastics #1 & 2 that are NOT bottles. You can find the number in the middle of a chasing arrows symbol on the bottom of the container (see right).



We know Newportians love to recycle and Thompson's is counting on all of you to help us in this effort. **Please post the enclosed, updated WASTE 101 guide in your recycling area.**

It is likely there will be more changes in the future to recycling, so please continue to read all information from us. Any changes will first be posted to our website, thompsonsanitary.com along with direct mail to our customers, notifications through the newspaper and radio, as well as on our Facebook, Instagram, and Twitter accounts.

Rob Thompson

President, Thompson's Sanitary Service



7450 NE Avery Street
Newport, OR 97365
Phone.541.265.7249



Press Release

February 26th



February 26, 2018

FOR IMMEDIATE RELEASE

Recycling Changes effective March 1 for Thompson's customers

Thompson's Sanitary Service (TSS) has been forced to make recycling changes due to the Republic of China's *National Sword Act*, effective January 1st, 2018. It bans twenty-four (24) recyclable items from import to their country. The good news is China is trying to clean up their environment; the bad news is this severely impacts our recycling efforts because China has been the primary market for the West Coast.

As an industry, we are now forced to clean up our recycling stream to retain existing recycling markets. In that effort, as of March 1st, Thompson's Sanitary can no longer accept plastics #3-7 or shredded paper in their blue curbside mixed recycling carts. It is critical the recycling stay clean to keep the market viable. Plastic #1 & 2 bottles only are still recyclable. Put plastics #3-7 in your landfill/garbage cart as well as plastics #1 & 2 that are not bottles. You can find the number in the middle of a chasing arrows symbol on the bottom of the container.

Thompson's Sanitary Service customers are being notified this week by direct mail and email (if provided). If you are a TSS customer, please check your mailbox for complete information.

As of March 1st, the Newport Recycling Center, located at 7450 NE Avery Street, Newport (next to the TSS office), will be charging \$10 per visit to non-curbside TSS customers for drop off of mixed recycling including plastics #1 & 2 bottles only, cardboard, mixed paper, and metal. Paint, battery, and electronics recycling are still free of charge for drop-off.

It is likely there will be more changes in the future to recycling. Any changes will first be posted to Thompson's website, thompsonsanitary.com, along with direct mail to customers, press releases to the newspaper and radio, as well as on our Facebook, Instagram, and Twitter accounts.

7450 NE AVERY STREET • NEWPORT, OREGON • 97365
PHONE: (503) 265-7219 • FAX: (503) 265-3034 • EMAIL: info@thompsonsanitary.com

1/3 Cut – in billing.

Recycling Changes

As of March 1st, our curbside Comingled/Mixed Recycling blue cart will **no longer accept plastics #3-7** (number found on the bottom of the container) as well as **no shredded paper**.



Visit
thompsonsanitary.com
for more information

YES
please recycle



Plastic #1 & 2 Bottles Only
including milk jugs, fruit juice
bottle/jugs and soda/pop bottles.



NO
thanks



Plastics #3-7, including
Styrofoam, tubs, yogurt
containers, berry boxes, meat
trays, flower pots, and cups

Concurrence Letter



Oregon

Kate Brown, Governor

Department of Environmental Quality

Western Region Eugene Office

165 East 7th Avenue, Suite 100

Eugene, OR 97401

(541) 686-7830

FAX: (541) 686-7331

TTY: 711

February 27, 2018

TRANSMITTED VIA ELECTRONIC MAIL

Mr. Rob Thompson, General Manager
Thompsons Sanitary Service, Inc
PO Box 643
Newport OR 97365

RE: Conditional Material Handling Concurrence

Dear Rob,

As you are aware, China prohibited the import of certain mixed paper and plastic grades beginning on Jan. 1, 2018. Additionally, China has announced a new and exceedingly stringent recyclable contamination standard of 0.5 percent. China is the main market for Oregon's recyclable mixed paper and plastic. This has created a condition where the primary market for much of Oregon's recyclable materials is severely constrained and in jeopardy of disappearing.

In an effort to meet the tightened contamination standards, recycling processing facilities have slowed their sorting lines. This has resulted in a slower throughput of materials. The flow of materials from Oregonians sent for recycling has not slowed to match this constraint. Without an outlet for the collected materials, sorting and storage capacity have become constrained. In some cases, processing and storage capacity have already been exceeded and recycling costs exceed disposal costs.

DEQ, working closely with representatives from the recycling industry and local governments has initiated a short-term stopgap solution to help alleviate the flow of materials throughout the collection and processing system. When all options to find markets for recyclable commodities have been exhausted, DEQ concurs that landfilling these materials on a temporary basis is an unfortunate but needed option at this time.

This concurrence is subject to the conditions set forth below:

Effective date: February 27, 2018

Duration: This concurrence will expire May 1, 2018 unless otherwise notified. Adjustments may be made if conditions change.

Recycling Depot



Recycling Depot (signage)



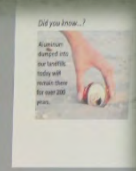
Recycling Depot (signage)



BE LIKE
GREEN TEAM
RECYCLE!



- Teaching Sustainability to Youth
- Educating the Public



3127

Mr. Beaud

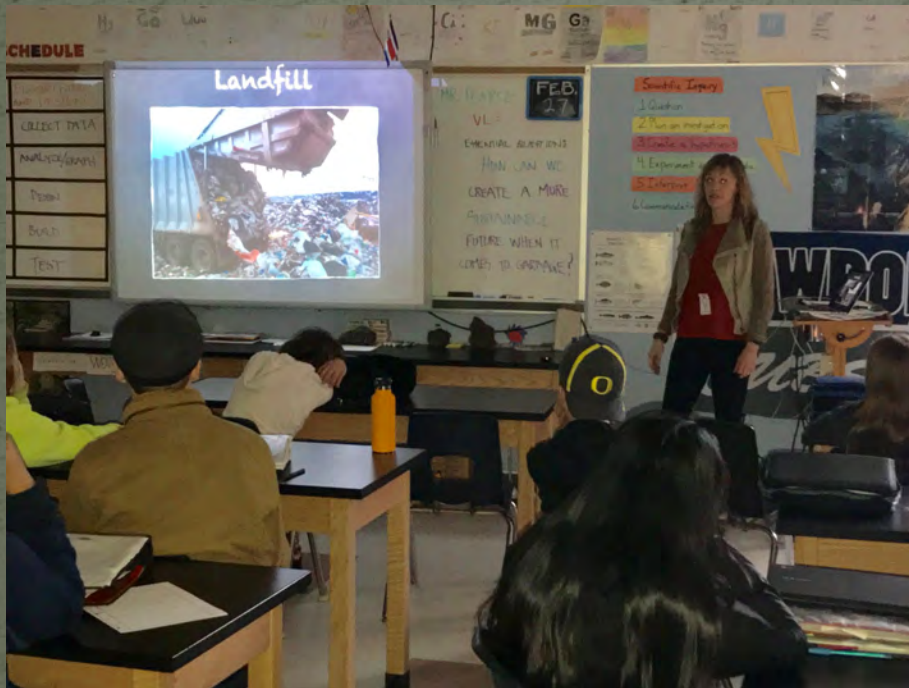


DEPOSIT
CANS

Before You
Toss It...
Can It Be Recycled?
Do It
With Green Team!



Green School – 2/27/18



Field Trip 3/1/18



Field Trip 3/1/18



Great Law of the Iroquois

To think seven generations ahead (about 140 years into the future) and decide whether the decisions they make today would benefit their children seven generations into the future



SUSTAINABILITY
EVERYTHING'S CONNECTED

