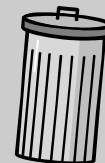




TRASH TALK



Trash Talk serves commercial and residential Thompson's Sanitary Service customers in Newport and the surrounding area. It is published four times a year.

DID YOU KNOW...

• **The aluminum can is the most recycled drink container on the planet?** Here are some other facts about aluminum:

- Over 50% of the aluminum cans produced are recycled.
- Aluminum is a durable and sustainable metal; 2/3 of the aluminum ever produced is in use today.
- Last year 54 billion cans were recycled saving energy equivalent to 15 million barrels of crude oil—America's entire gas consumption for one day.
- A used aluminum can is recycled and back on the grocery shelf as a new can, in as little as 60 days. That's closed loop recycling at its finest!

Source: website www.earth911.org

Check out their website and you'll find a lot of useful recycling information including an environmental glossary!



7450 NE Avery Street
PO Box 643
Newport, OR 97365
Phone: 541-265-7249

Web: <http://www.thompsonsanitary.com>
Email: aimee@thompsonsanitary.com



Where does it go?

The most frequent comment the TSS staff hears from our customers is, "This is a great program, but where does the com-

mingled recycling go after it leaves my curb?"

In the past, recycling plants dictated to the consumer how recycling had to be sorted because it was

the only way those facilities would accept it.

Now, many of those plants have retrofitted their facilities to use a system of conveyor belts and manual labor to do the sorting for us.

You, our customer, fills the blue recycling cart full of co-mingled recyclables (no glass). Thompson's Sanitary picks it up and hauls it to the sorting facility (see picture 1.1). From there it goes through a system of conveyor belts, rotating drums, magnets, and fluffers which are used to sort the materials back to a basic category of recycling (e.g. Newsprint or Tin). In addition to all the automated machinery and technology,

lots of manual labor will sort through and pull out any recyclables that have not been separated by the automated system. The materials are then sent to separate mills to be used in the next generation of recycled products. Many of these materials are consumed by mills in the Northwest to create new containers or paper depending on the mill. The

other materials are shipped a great distance by truck, rail, and even ships which could potentially go anywhere in the world to fill the need for that commodity.

Because the new recycling system is eas-



ier for customers, the amount of recycling tons TSS collects has almost doubled since the beginning of the new program in November 2004, which in turn helps pay the costs associated with sorting. Meaning your bill is unchanged and you enjoy the benefits of a better and easier recycling service. We feel its truly a WIN-WIN!!! Have more questions? Email: rob@thompsonsanitary.com or print your own recycling guide at our website.

This newsletter published by Aimee Thompson. If you have questions, ideas, or comments regarding this newsletter, please email aimee@thompsonsanitary.com or call at (541) 270-5228.



Meet...

Dianne Rockholt

Length of employment at Thompson's: 5 1/2 years

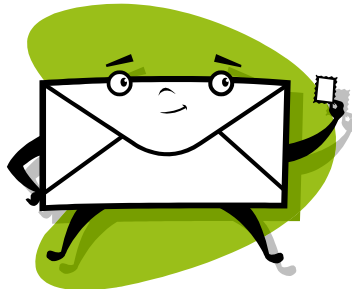
If you've been to our office, you've probably seen the friendly face of Dianne Rockholt, one of our indispensable office staff and you might even

have met her dog Bessie. Bessie, a five year old Boston Terrier, sometimes makes it to work with her and likes to assist Dianne with her daily routine as well as greet customers.

You'll find Dianne conversing with customers on the phone, dispatching drivers, and working on accounts receivable along with many other duties which make our office function.

On a personal note, Dianne has been married for 21 years to Brian Rockholt and together they have two children, Erik (19 yrs) who is a freshman at Merced College in Merced, CA and Greg (17 yrs), a junior at Newport High School. Dianne also enjoys reading, cooking, and listening to music in her spare time.

Return Envelopes



are coming to you!

We are proud to announce that in the next few months, Thompson's Sanitary Service will be providing return envelopes to make paying your bill easy and more timely. The envelope itself is made with recycled paper which includes a window with *Earth-first* film—the only recyclable plastic film in the industry. Please note, this envelope will be included with your statement at no additional cost to you.

Thompson's Sanitary Service provides Garbage/Recycling both Residential and Commercial, Drop Box, Office Paper for our Business Customers, Medical Waste, Shredding Service, Water Delivery, and Top Soil Delivery

CALENDAR

May 6th & 7th, 2005, 10am-2pm

Residential Wood and Yard Waste Program @ Skelton Rd. across Butler Bridge Rd. in Toledo.

May 8th, 2005

It's Mother's Day! Do something nice...take out the trash so Mom won't have to!

June 4th & 5th, 2005 10am-2pm

Residential Wood and Yard Waste Program @ Skelton Rd. across Butler Bridge Rd. in Toledo.



June 19th, 2005

Celebrate Father's Day with dear ol' Dad by helping him clean out the garage and haul it to the Agate Beach transfer station. Transfer station hours are: Tuesday-Saturday, 9am-5pm.

July 2nd & 3rd, 2005, 10am-2pm

Residential Wood and Yard Waste Program @ Skelton Rd. across Butler Bridge Rd. in Toledo.

What does this truck do?



WATER DELIVERY!!!

Don't have enough water to make it through the summer or just need a large amount for a special project? Thompson's Sanitary Service can deliver potable water directly to your holding tank. Simply give us a call at 265-7249 and schedule your water delivery today.