



TRASH TALK

Serving commercial and residential customers in Newport, Ore.

7450 NE AVERY, NEWPORT, OREGON 97365

PHONE: (541) 265-7249, FAX: (541) 265-3034



Windy Days call for a little forethought

This winter our community has already been hammered with more than our fair share of high winds. When those high-speed winds blow about town, so does garbage and recycling if it's not properly stowed away in your cart. In January, the *Newport News Times* offered up an article outlining ways to keep litter off our streets when the winds are ripping. Along those same lines, here are some tips to keep garbage out of our streets and yards:

- **Tie your garbage up in bags so if the cart happens to blow over, garbage does not get littered across your neighborhood.**
- **Place recyclables in a paper bag and fold over before placing in cart so contents do not easily blow out.**
- **Put your cart out at 6:00am the morning of your service day, when wind is in the forecast, to avoid some of the nighttime storms.**

As some citizens may have noticed, one of the most common recyclables blowing around our community is

plastic bags. Please, please make sure you've got those properly disposed of or simply stash them in your car for your next grocery trip and recycle

them for free at the store entrance in their marked bins or bring them to the Agate Beach Recycling Center where they can be recycled and kept out of our beautiful landscape. If you find yourself

wanting to err more on the "safe than sorry" during the

windy season, we offer a number of services for a small fee:

<u>Service</u>	<u>City/County</u>
Bungee Cord	\$2.40/\$2.60
Return for Service	\$5.95/6.60
Relocate Cart	\$4.85/5.25
One Day Valet	\$2.50/\$2.65

And during our recent bout of storms, we waived extra trash fees following those high winds for folks not wanting to put their trash out. Follow us on Facebook or check out our website for those notifications.



Ripped from the Headlines: Newport News Times article "Tips offered to keep wind from making garbage day messy" published January 4, 2012.

In the Know

Earth Day April 22

Tell us what you're doing for Earth Day!

Share with Thompson's and your community ideas for Earth Day by posting it on our Facebook page. What are some simple ideas you can do locally to preserve our planet? We'd love to hear from you!



What's a QR Code?

QR codes are barcodes that can be scanned by a smartphone and information will automatically download.

You've probably noticed QR codes popping up all over the place lately (e.g. magazines, realty signs, even billboards.). If you have a smartphone, download an app that will scan QR codes and read them for you. Notice the QR codes throughout this newsletter (see above).



Please recycle this newsletter when it's useful life is over





Community Assistance for
Neighbors with Cancer



Thank you to everyone who supported our CAN Cancer campaign in October. CAN Cancer is a partnership with local hospital foundations and the Lincoln County Haulers (which TSS is a part of) working together to help give our neighbors assistance with their fight against cancer. The tax-deductible donations help cover non-medical living expenses for Lincoln County residents fighting all forms of cancer. Lavender envelopes went out to all of our customers and you

responded in a big way! Here are the CAN Cancer numbers county-wide:

*Thank you for
your generosity
TSS customers!*

Pacific
Communities
Hospital
Foundation --
\$3,605.37
North Lincoln
Hospital
Foundation --
\$1,716.67

So far PCHF has given out support in the amount of \$769.29
NLHF has given \$200.00. Patients can receive support up to \$250 for non-medical expenses related to their care and treatment, such as fuel, travel, utilities, and food costs.



Paper or Plastic - neither!

In communities across Oregon, citizens are discussing the impact of single-use bags in

our waste stream.

If you aren't already doing so, now might be a good time to start getting in the habit of bringing your own bags to tote home your family's groceries.

Almost all grocery stores are now offering reusable bags at a low price as well as giving you a small discount each time you buy groceries and bring a reusable bag with you. This is an easy thing folks can do to reduce the amount of single use bags being consumed in our community.



Seafood & Wine Festival is coming up - Remember to recycle your glass!

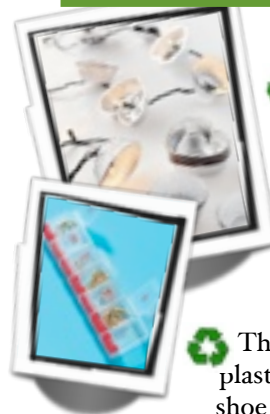


Free Glass Recycling Locations:

- Lincoln County Recycling Center 8096 NE Avery St.
- Rogue Brewery South Beach
- Near Hospital 610 SW 9th St.

REUSE

At Thompson's, we like to find new uses for old things and the magazine and website *Real Simple* is one of our favorite places for finding tips. Check out these simple and fun ideas...



♻️ Cut down old greeting cards to make gift tags.

♻️ Use cupcake liners to make your string of lights party-ready.

♻️ Dental floss to mend that broken umbrella.

♻️ The top of a large plastic tote for a wet shoe tray.

♻️ Stuff shoes with newspaper between wears

♻️ as an odor neutralizer.
♻️ Small gift boxes make great jewelry holders or desk organizers when clipped together and put in a drawer.

♻️ Vitamin organizer as travel jewelry box

